

pAdenoX-Tet3G (Linear)

Catalog No(s).

631179 (Not sold separately).
Sold as part of 631180.

Amount

10 µl pAdenoX-Tet3G (Linear) Vector (200 ng/µl)

Lot Number

Specified on product label.

pAdenoX-Tet3G (Linear) Vector Information

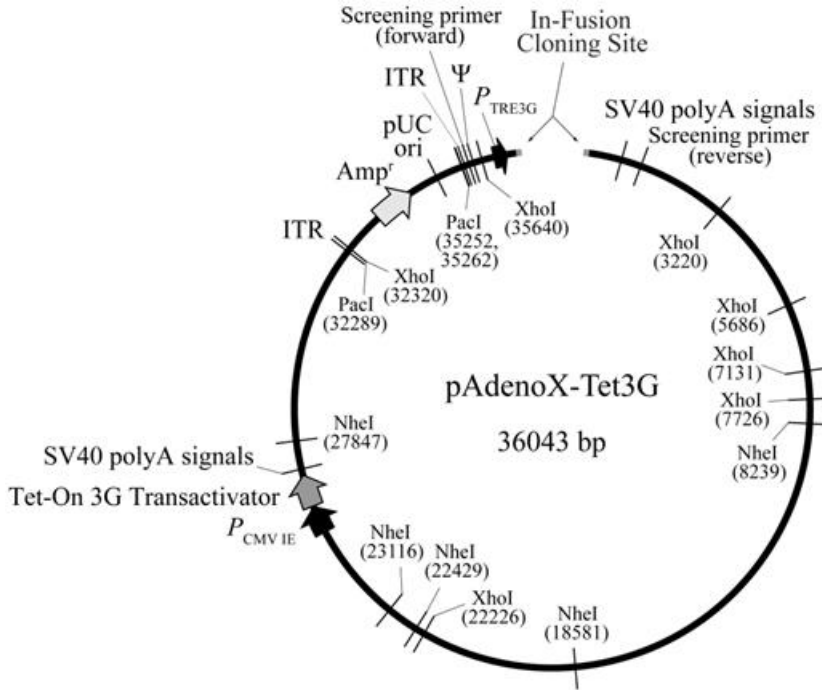


Figure 1. pAdenoX-Tet3G (Linear) vector map.

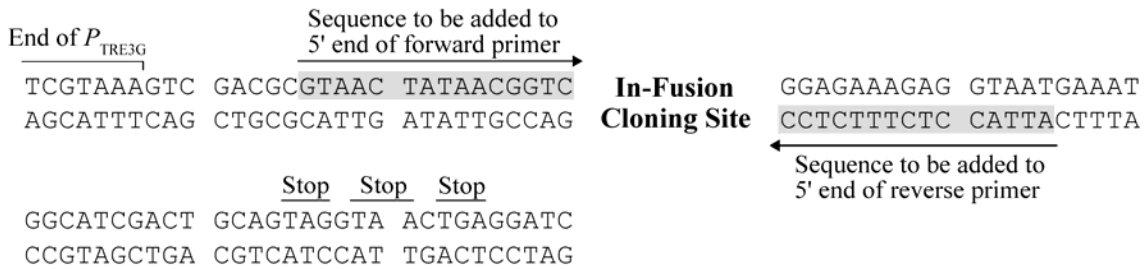


Figure 2. pAdenoX-Tet3G (Linear) In-Fusion cloning site.

Clontech Laboratories, Inc.

A Takara Bio Company
1290 Terra Bella Avenue, Mountain View, CA 94043, USA
U.S. Technical Support: tech@clontech.com

United States/Canada 800.662.2566	Asia Pacific +1.650.919.7300	Europe +33.(0)1.3904.6880	Japan +81.(0)77.543.6116
--------------------------------------	---------------------------------	------------------------------	-----------------------------

Late update: July 12, 2011

Location of Features

- SV40 polyA signals: 106–903
- Screening Primer (reverse) [complementary]: 936–955
- P_{CMVIE} (human cytomegalovirus promoter): 25329–26010
- Tet-On 3G Transactivator: 26097–26843
- SV40 polyA signals: 26858–27312
- ITR (inverted terminal repeat): 32216–32275
- Amp^r (ampicillin resistance gene; β -lactamase): 33176–34036
- pUC origin of replication: 34681–34854
- ITR (inverted terminal repeat): 35265–35324
- Screening Primer (forward): 35368–35392
- Ψ (packaging signal): 35457–35605
- P_{TRE3G} (3rd generation Tet-responsive promoter): 35645–36020

NOTICE TO PURCHASER:

Clontech products are to be used for research purposes only. They may not be used for any other purpose, including, but not limited to, use in drugs, in vitro diagnostic purposes, therapeutics, or in humans. Clontech products may not be transferred to third parties, resold, modified for resale, or used to manufacture commercial products or to provide a service to third parties without prior written approval of Clontech Laboratories, Inc.

Your use of this product is also subject to compliance with the licensing requirements listed below and described on the product's web page at <http://www.clontech.com>. It is your responsibility to review, understand and adhere to any restrictions imposed by these statements.