

pLVX-EF1 α -IRES-Puro

Catalog No(s).

631988 (Not sold separately).
Sold as part of 631253.

Amount

20 μ l pLVX-EF1 α -IRES-Puro vector (500 ng/ μ l)

Lot Number

Specified on product label.

pLVX-EF1 α -IRES-Puro Vector Information

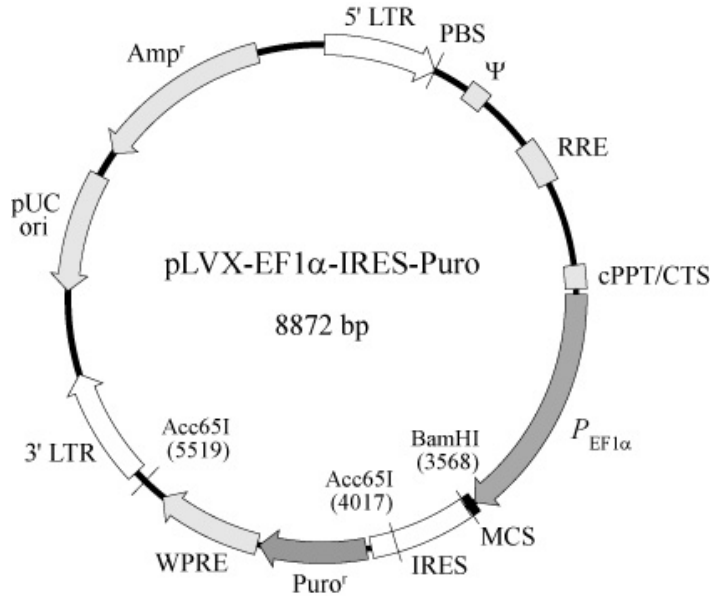


Figure 1. pLVX-EF1 α -IRES-Puro vector map.

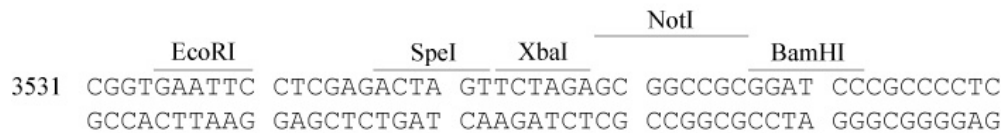


Figure 2. pLVX-EF1 α -IRES-Puro multiple cloning site.

Clontech Laboratories, Inc.

A Takara Bio Company
1290 Terra Bella Avenue, Mountain View, CA 94043, USA
U.S. Technical Support: tech@clontech.com

United States/Canada 800.662.2566
Asia Pacific +1.650.919.7300
Europe +33.(0)1.3904.6880
Japan +81.(0)77.543.6116
Late update: July 12, 2011

Location of Features

- 5' LTR (5' long terminal repeat): 1–635
- PBS (primer binding site): 636–653
- Ψ (packaging signal): 685–822
- RRE (Rev-response element): 1303–1536
- cPPT/CTS (central polypurine tract/central termination sequence): 2028–2151
- $P_{EF1\alpha}$ (human elongation factor 1 alpha promoter): 2185–3519
- MCS (multiple cloning site): 3535–3572
- IRES (internal ribosome entry site): 3573–4148
- Puro^r (puromycin resistance gene): 4181–4780
- WPRE (woodchuck hepatitis virus posttranscriptional regulatory element): 4794–5385
- 3' LTR (3' long terminal repeat): 5588–6224
- pUC origin of replication: 6693–7366 (complementary)
- Amp^r (ampicillin resistance gene; β -lactamase): 7511–8507 (complementary)

NOTICE TO PURCHASER:

Clontech products are to be used for research purposes only. They may not be used for any other purpose, including, but not limited to, use in drugs, in vitro diagnostic purposes, therapeutics, or in humans. Clontech products may not be transferred to third parties, resold, modified for resale, or used to manufacture commercial products or to provide a service to third parties without prior written approval of Clontech Laboratories, Inc.

Your use of this product is also subject to compliance with the licensing requirements listed below and described on the product's web page at <http://www.clontech.com>. It is your responsibility to review, understand and adhere to any restrictions imposed by these statements.