

## pMetLuc-Mem Reporter

**Catalog No(s).**  
631758

**Amount**  
20 µl pMetLuc-Mem Reporter Vector (500 ng/µl)

**Lot Number**  
Specified on product label.

### pMetLuc-Mem Reporter Vector Information

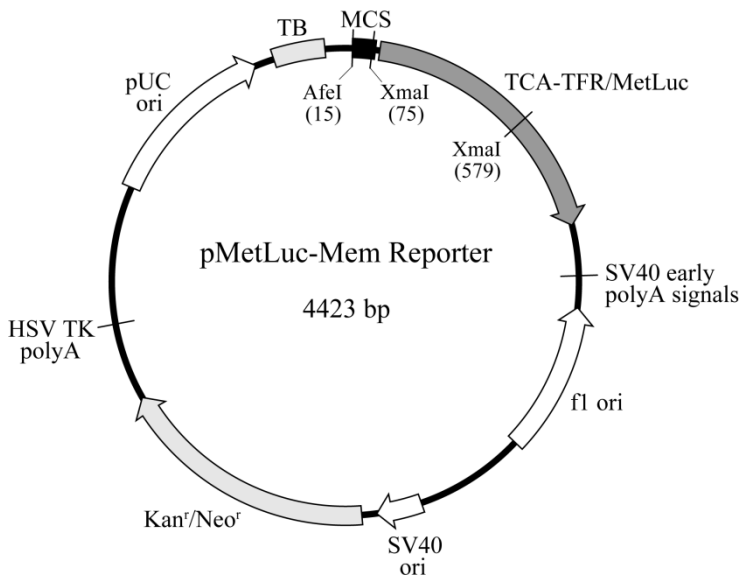


Figure 1. pMetLuc-Mem Reporter vector map.

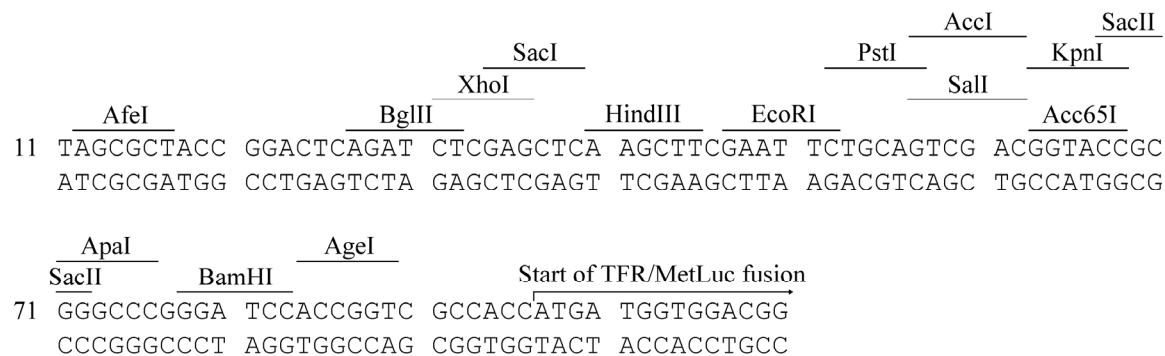


Figure 2. pMetLuc-Mem Reporter multiple cloning site.

**Clontech Laboratories, Inc.**

A Takara Bio Company  
1290 Terra Bella Avenue, Mountain View, CA 94043, USA  
U.S. Technical Support: [tech@clontech.com](mailto:tech@clontech.com)

United States/Canada 800.662.2566  
Asia Pacific +1.650.919.7300  
Europe +33.(0)1.3904.6880  
Japan +81.(0)77.543.6116  
Late update: July 12, 2011

## Location of Features

- MCS (multiple cloning site): 12–83
- TCA-TFR/MetLuc (chimeric non-secreted, membrane-bound *Metridia* luciferase): 97–927
- SV40 early polyA signals: 1082–1116
- fl origin of replication: 1179–1634 (complementary)
- SV40 origin of replication: 1975–2113
- Kan<sup>r</sup>/Neo<sup>r</sup> (kanamycin/neomycin resistance gene): 2159–2950
- HSV TK polyA signal : 3189–3207
- pUC origin of replication: 3538–4181
- TB (transcription blocker) : 4211–4364

## NOTICE TO PURCHASER:

Clontech products are to be used for research purposes only. They may not be used for any other purpose, including, but not limited to, use in drugs, in vitro diagnostic purposes, therapeutics, or in humans. Clontech products may not be transferred to third parties, resold, modified for resale, or used to manufacture commercial products or to provide a service to third parties without prior written approval of Clontech Laboratories, Inc.

Your use of this product is also subject to compliance with the licensing requirements listed below and described on the product's web page at <http://www.clontech.com>. It is your responsibility to review, understand and adhere to any restrictions imposed by these statements.