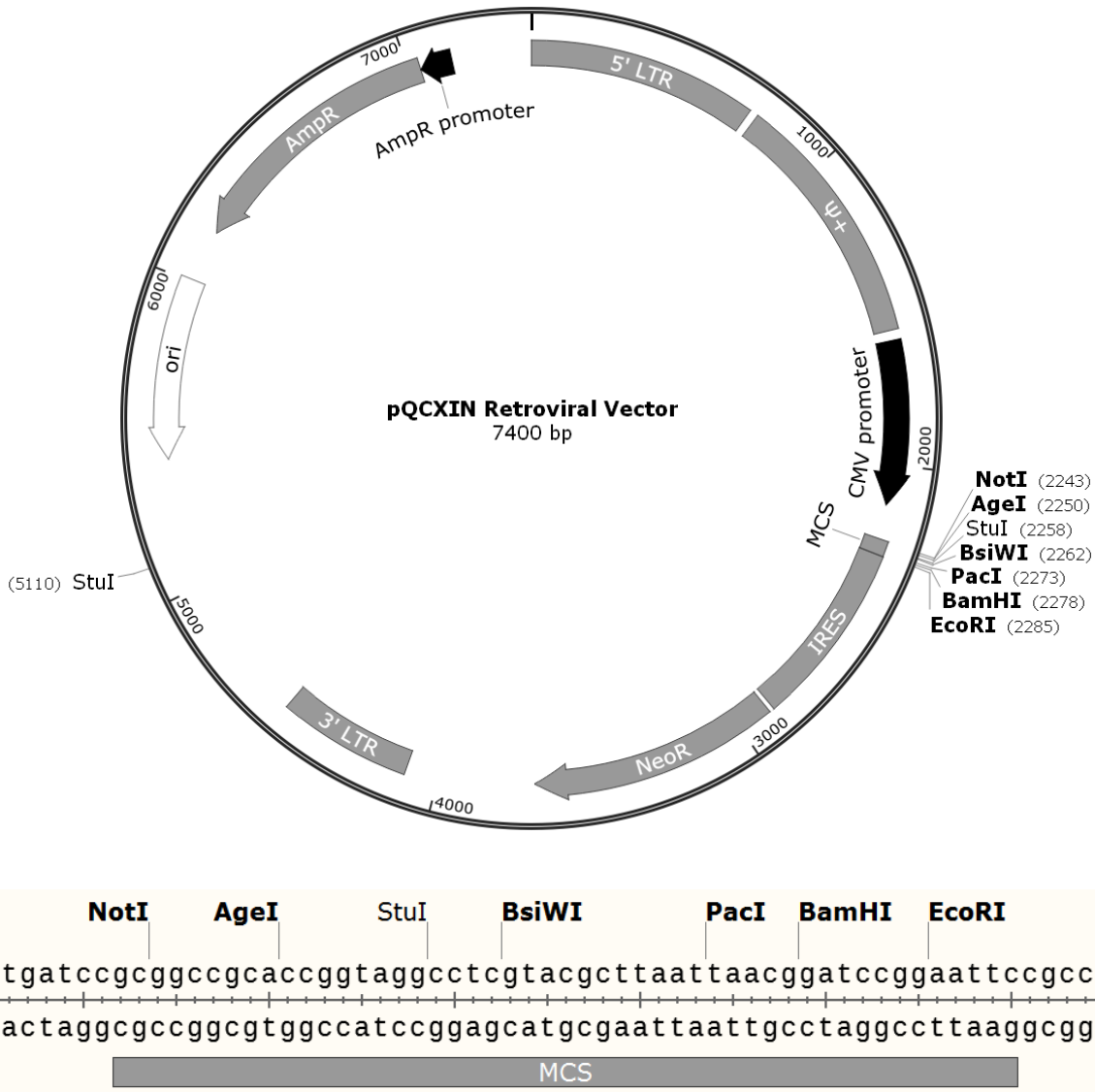


## Retro-X™ Q Vector Set

**Catalog No.**  
631516



**Figure 1. pQCXIN Retroviral Vector map and multiple cloning site.**

**Clontech Laboratories, Inc.**  
A Takara Bio Company  
1290 Terra Bella Avenue, Mountain View, CA 94043, USA  
U.S. Technical Support: [tech@clontech.com](mailto:tech@clontech.com)

United States/Canada 800.662.2566 (112113)	Asia Pacific +1.650.919.7300	Europe +33.(0)1.3904.6880	Japan +81.(0)77.543.6116
--	---------------------------------	------------------------------	-----------------------------

## Location of Features (pQCXIN Retroviral Vector)

- 5' LTR (5' long terminal repeat): 1–728
- $\Psi^+$  (extended packaging signal): 758–1567
- $P_{CMV}$  (CMV promoter): 1601–2132
- MCS: 2242–2290
- IRES (internal ribosome entry site): 2292–2881
- Neo<sup>R</sup> (neomycin resistance gene): 2895–3689
- 3' LTR (3' long terminal repeat): 4106–4531
- ori (high-copy-number ColE1/pMB1/pBR322/pUC origin of replication): 5419–6007
- Amp<sup>R</sup> (ampicillin resistance gene): 6178–7038
- Amp<sup>R</sup> promoter: 7039–7143
- See the “pQC Seq/PCR Primers” section for primer details.

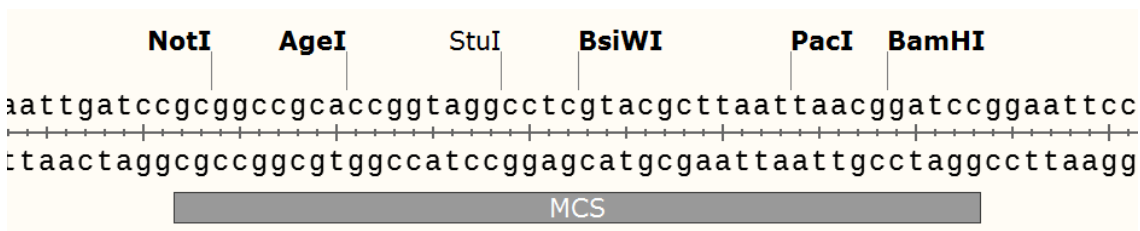
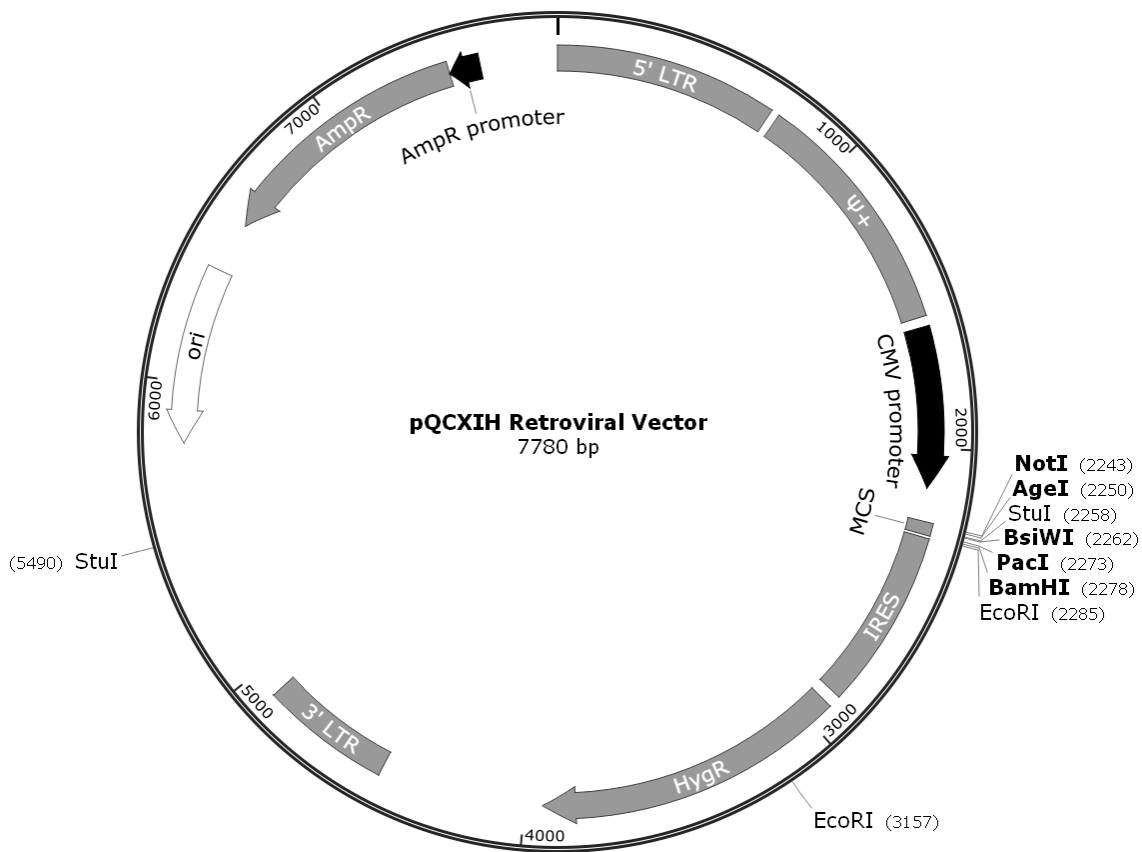


Figure 2. pQCXIH Retroviral Vector map and multiple cloning site.

## Location of Features (pQCXIH Retroviral Vector)

- 5' LTR (5' long terminal repeat): 1–728
- $\Psi^+$  (extended packaging signal): 758–1567
- $P_{CMV}$  (CMV promoter): 1601–2132
- MCS: 2242–2283
- IRES (internal ribosome entry site): 2292–2881
- Hyg<sup>R</sup> (hygromycin resistance gene): 2920–3939
- 3' LTR (3' long terminal repeat): 4486–4911
- ori (high-copy-number ColE1/pMB1/pBR322/pUC origin of replication): 5799–6387
- Amp<sup>R</sup> (ampicillin resistance gene): 6558–7418
- Amp<sup>R</sup> promoter: 7419–7523
- See the “pQC Seq/PCR Primers” section for primer details.

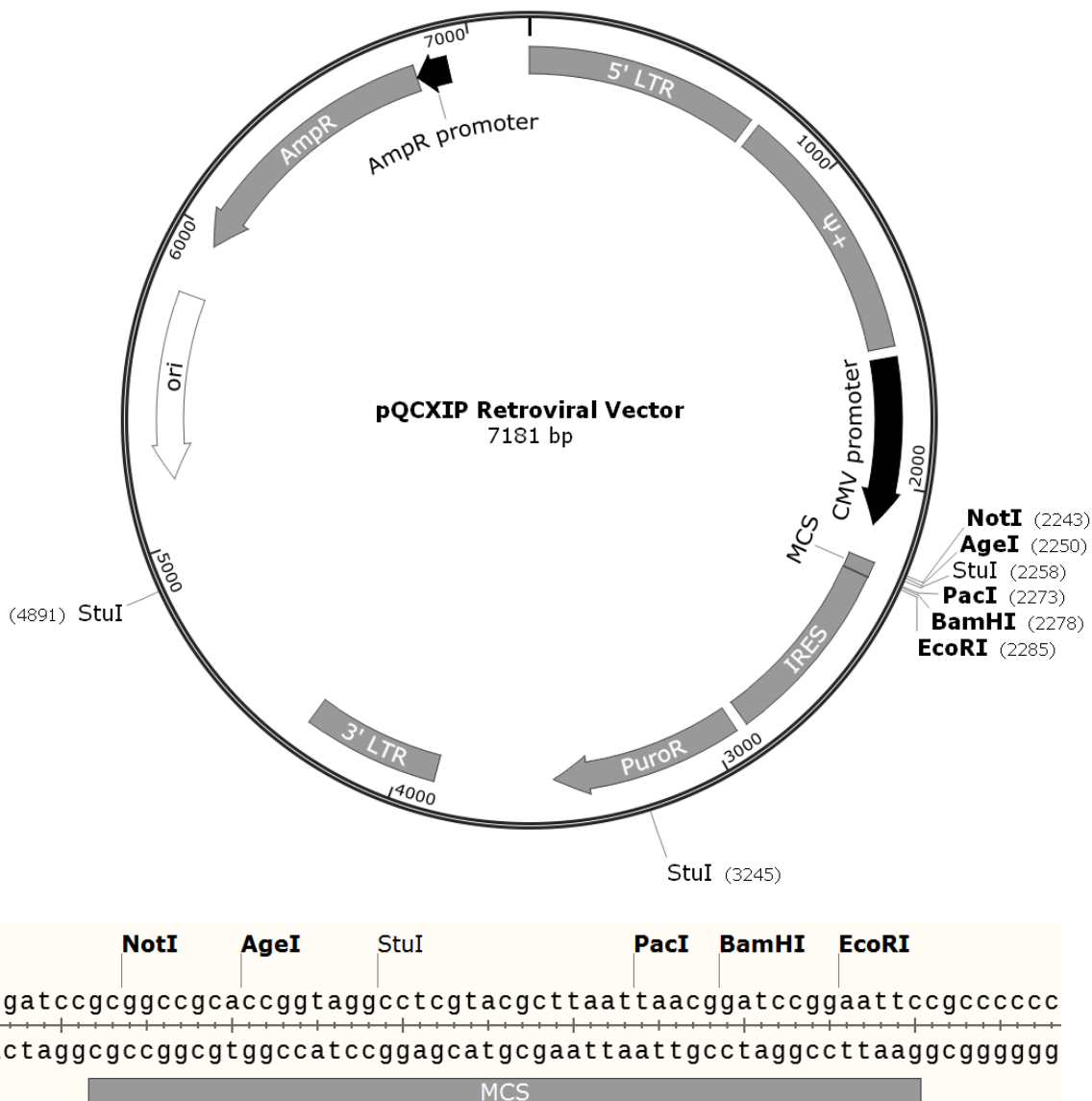


Figure 3. pQCXIP Retroviral Vector map and multiple cloning site.

## Location of Features (pQCXIP Retroviral Vector)

- 5' LTR (5' long terminal repeat): 1–728
- $\Psi^+$  (extended packaging signal): 758–1567
- $P_{CMV}$  (CMV promoter): 1601–2132
- MCS: 2242–2290
- IRES (internal ribosome entry site): 2292–2881
- Puro<sup>R</sup> (puromycin resistance gene): 2917–3513
- 3' LTR (3' long terminal repeat): 3887–4312
- ori (high-copy-number ColE1/pMB1/pBR322/pUC origin of replication): 5200–5788
- Amp<sup>R</sup> (ampicillin resistance gene): 5959–6819
- Amp<sup>R</sup> promoter: 6820–6924
- See the “pQC Seq/PCR Primers” section for primer details.

## pQC Seq/PCR Primers

5' primer : 5'-ACGCCATCCACGCTGTTTTGACCT-3'

3' primer : 5'-AAGCGGCTTCGGCCAGTAACGTTA-3'

Figure 4. pQC Seq/PCR Primer sequences

## Location of Sequencing Primers (for all Retro-X Q Vectors)

- pQCXIN Retroviral Vector
  - 5' primer: 2141–2164
  - 3' primer: 2329–2352
- pQCXIH Retroviral Vector
  - 5' primer: 2141–2164
  - 3' primer: 2329–2352
- pQCXIP Retroviral Vector
  - 5' primer: 2141–2164
  - 3' primer: 2329–2352

---

## Notice to Purchaser

Clontech® products are to be used for research purposes only. They may not be used for any other purpose, including, but not limited to, use in drugs, *in vitro* diagnostic purposes, therapeutics, or in humans. Clontech products may not be transferred to third parties, resold, modified for resale, or used to manufacture commercial products or to provide a service to third parties without prior written approval of Clontech Laboratories, Inc.

Your use of this product is also subject to compliance with the licensing requirements described on the product's web page at <http://www.clontech.com>. It is your responsibility to review, understand and adhere to any restrictions imposed by these statements.

Clontech, the Clontech logo, and Retro-X are trademarks of Clontech Laboratories, Inc. All other marks are the property of their respective owners. Certain trademarks may not be registered in all jurisdictions. Clontech is a Takara Bio Company. ©2013 Clontech Laboratories, Inc.

This document has been reviewed and approved by the Clontech Quality Assurance Department.